
INSTRUKCJA MONTAŻU



Układ paneli:
Pionowy



Kąt nachylenia:
10°



Rozstaw podpór:
3 m



Montaż:
Do fundamentu
(produkt w ofercie)

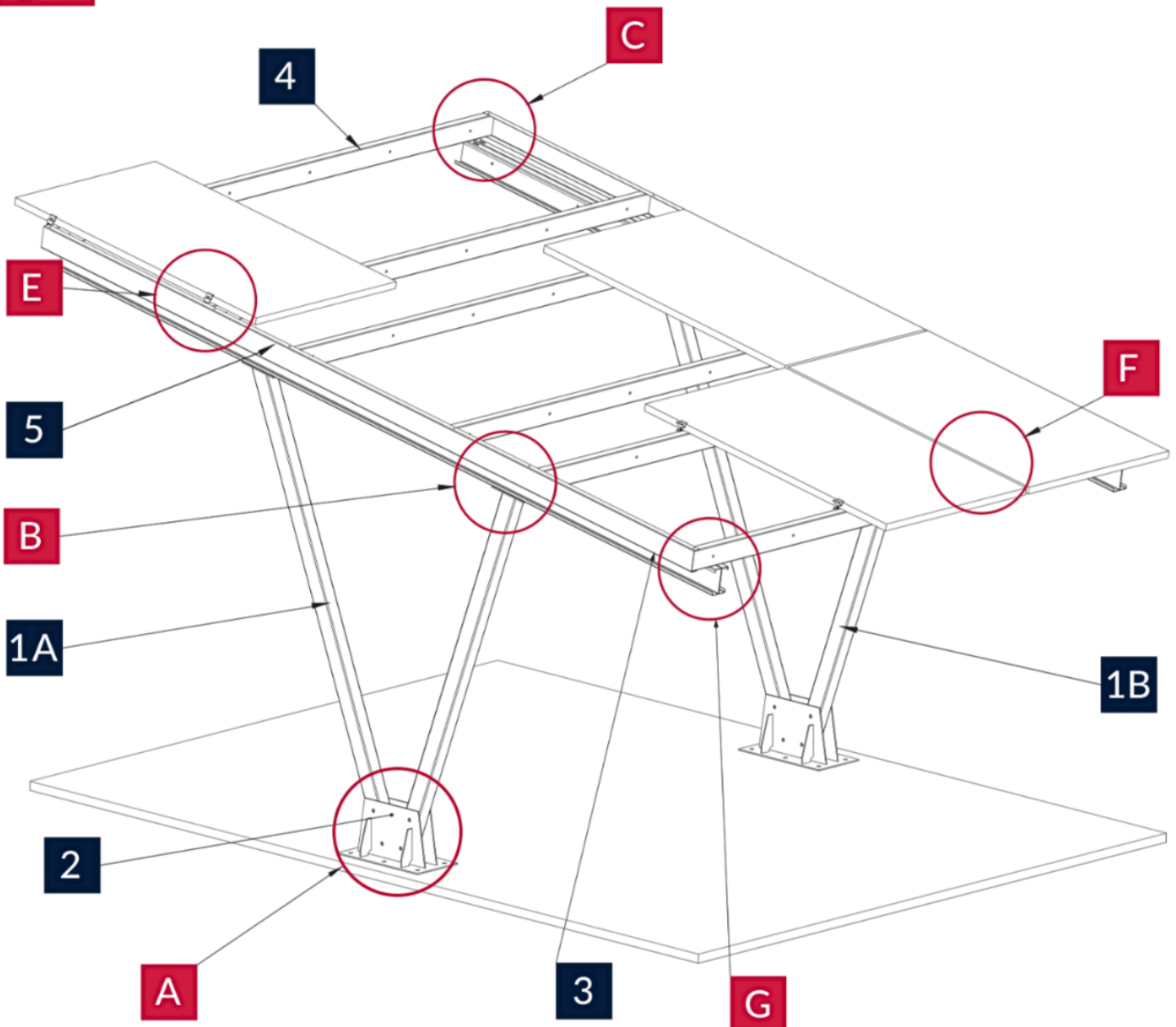


NARZĘDZIA POTRZEBNE DO MONTAŻU:

	rozmiar 6	rozmiar 2 x 19 mm	
	wkrętarka	koncówki - bity imbusowe	

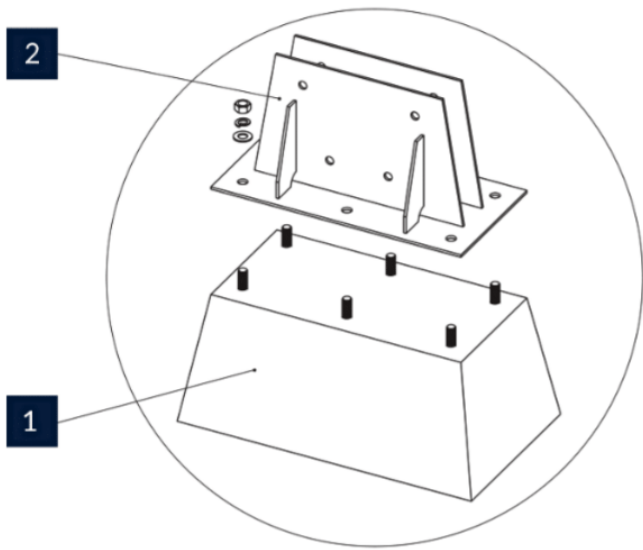


MONTAŻ

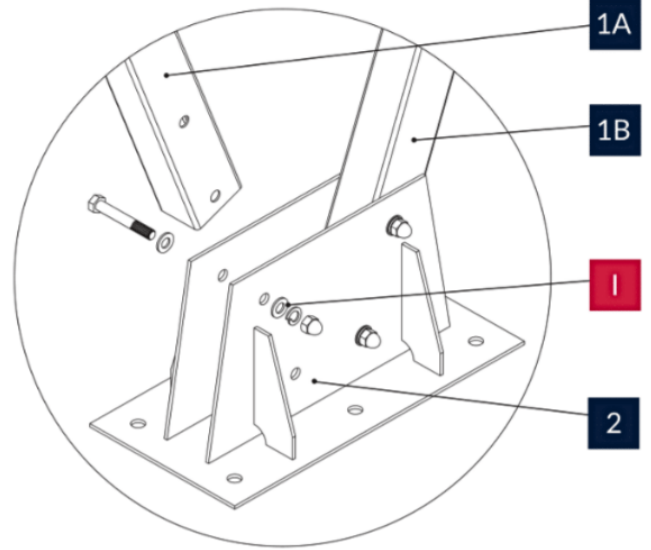




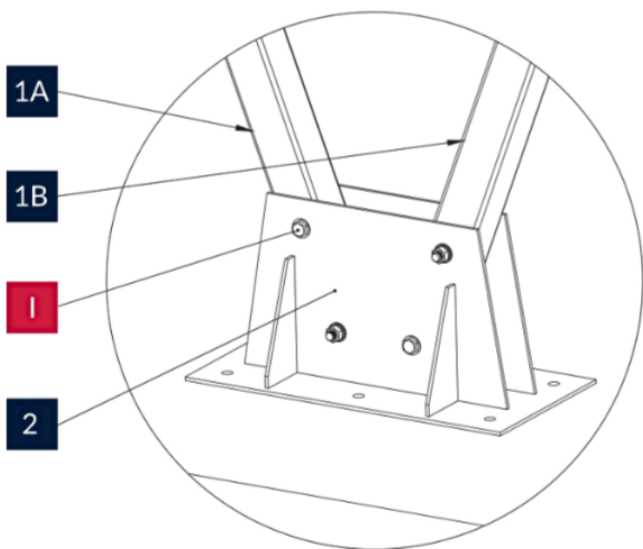
MONTAŻ



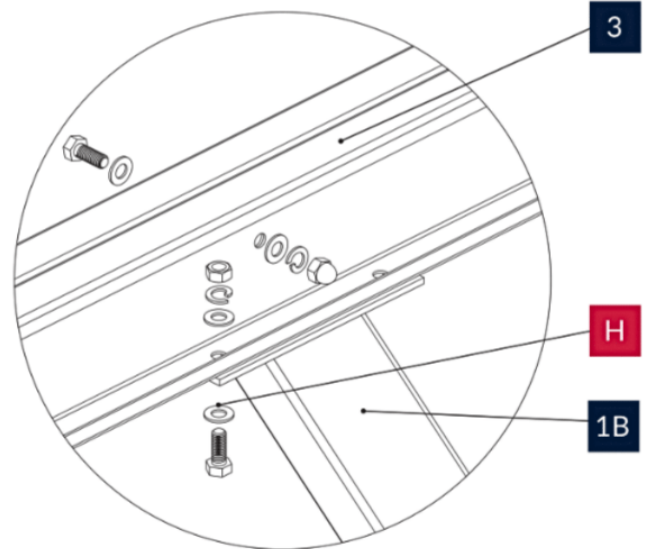
A



A



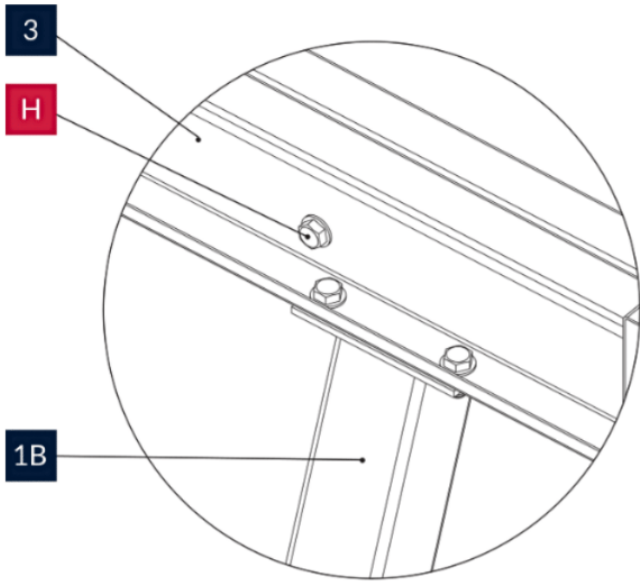
A



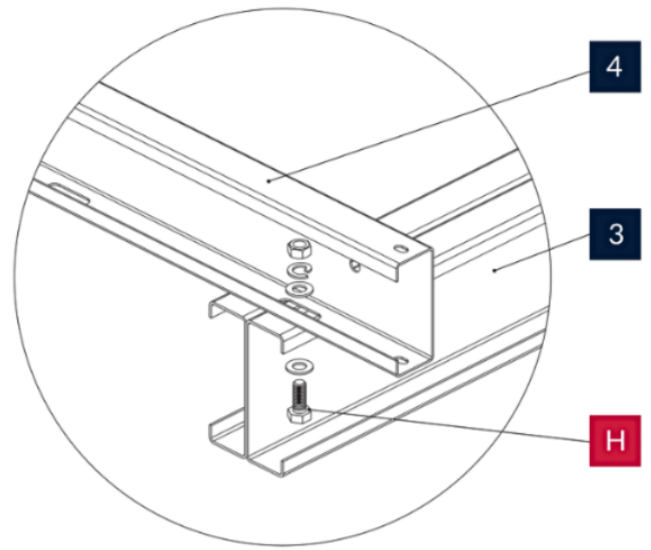
B



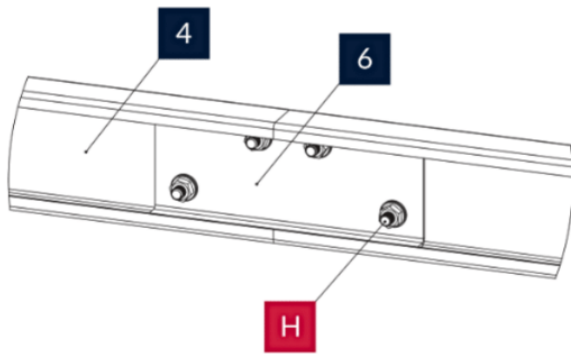
MONTAŻ



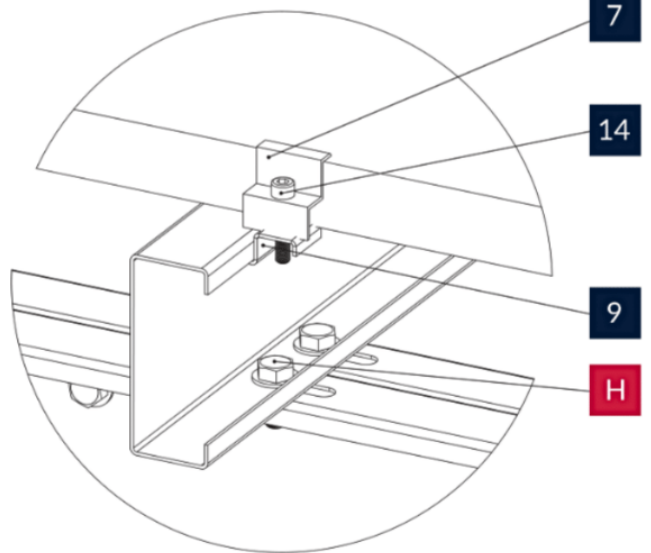
B



C



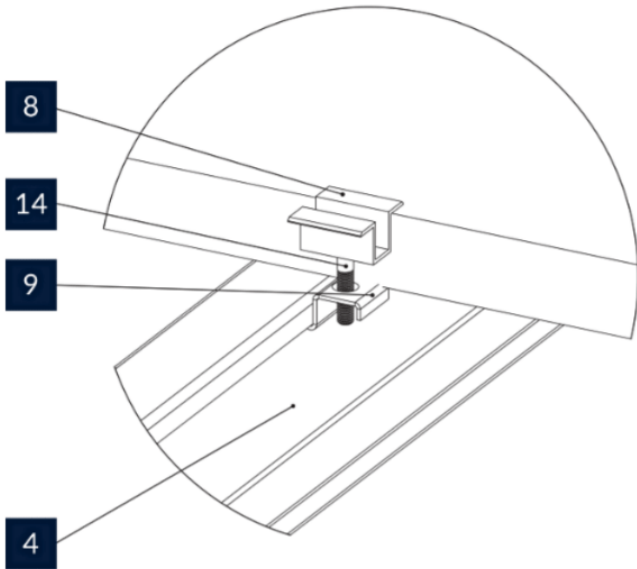
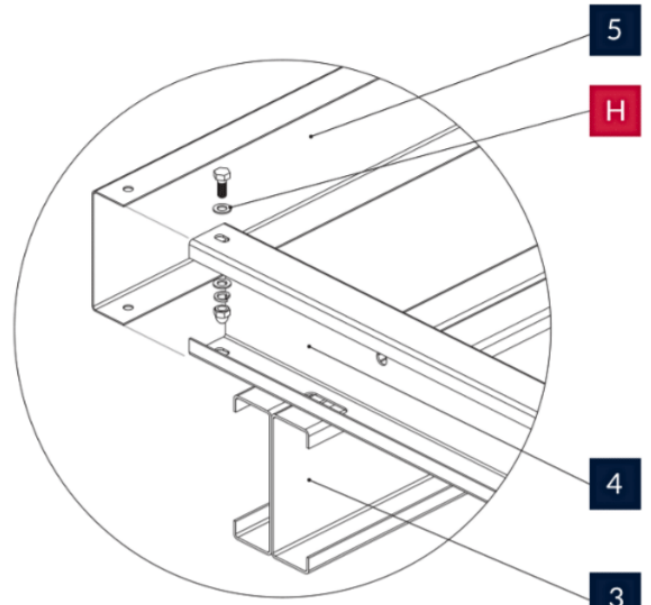
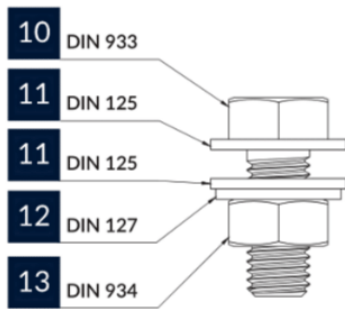
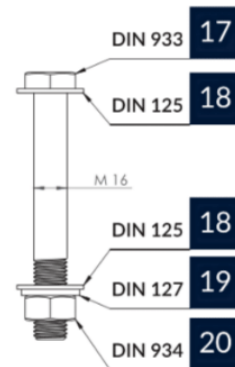
D



E



MONTAŻ

**F****G****H****I**

Momenty dokręcenia śrub	
Wielkość śruby	Moment [Nm]
M12	57
M8	Zgodnie z instrukcją montażu modułu