

Cable Accessories for Microinverter of HMT Series



3P-AC Trunk Cable, 12/10 AWG Cable

3P-AC Trunk Cable is used to connect the microinverter to distribution box. The Trunk Connector on the 3P-AC Trunk Cable is evenly distributed at intervals, Hoymiles provides 3P-AC Trunk Cable with different AC Trunk Connector spacing.



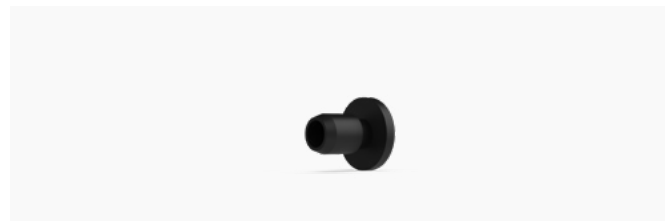
3P-AC Trunk Connector

The AC Sub Connector of the microinverter can be inserted into the port of the 3P-AC Trunk Connector. Plug and play connectors speed up and simplify installation.



3P-AC Trunk Port Cap

Used to protect vacant AC Trunk Port.



3P-AC Trunk End Cap

Used to protect the cable port of 3P-AC Trunk Connector at the end of the 3P-AC branch.



3P-AC Trunk Port Disconnect Tool

Used to disconnect the connection between the microinverter and the 3P-AC Trunk Connector.



3P-AC Trunk Connector Unlock Tool

Used to unlock the 3P-AC Trunk Connector upper cover so that the cable can be removed, replaced, and the 3P-AC Trunk End Cap installed.



DC Extension Cable

Connect the microinverter and the PV module when the distance between the two exceeds the original cable length.

Technical Specifications

Model		3P-AC Trunk Cable
Main Parameters		
Cable type		10AWG
Rated voltage		600V
Cable outer diameter		15.8±0.50mm
Ambient temperature range		-40°C~+90°C
AC Trunk Connector spacing		3.05m
Number of AC Trunk Connectors per single AC Trunk Cable		14
Single AC Trunk Cable length		45.5m
Compliance		
Product standard		UL44 UL1277 UL1581
RoHS compliant		Yes

Model		3P-AC Trunk Connector
Main Parameters		
Pin number		3P+N+PE
Rated current		32A (Use 10AWG/6mm ² copper cable)
Rated voltage		500V
Contact resistance		≤5 mΩ
Power frequency withstand voltage		3000V AC
Over voltage type		III
Connection Parameter		
Applicable cable specification		12/10 AWG
Applicable cable outer diameter		13~18mm
Cable connection type		Screw pressing
Sub connector connection type		Crimping
Mechanical Data		
Ambient temperature range		-40°C~+85°C
Dimensions(L×W×H mm)		200*45*120
Protection rating		IP68
Flame resistance degree		UL94-V0
Compliance		
Product standard		2PFG1915 ANSI/UL 6703-2017
RoHS compliant		Yes

Model		DC Extension Cable	
Cable			
Cable type		PV1-F 1X4	
Rated current		20A	
Rated voltage		Max.1800V DC	
Cable length		1m	
Ambient temperature range		-40°C ~ +90°C	
Product standard		2 PFG 1169/08.2007	
DC Connector			
Manufacturer	Betteri	Staubli	
Type	BC03A, BC03B	PV-KBT4/6II-UR	
Rated current	30A	39A(TUV), 30A(UL)	
Rated voltage	1000V DC(TUV), 600/1000V DC(CSA)	1000V DC(TUV), 1500V DC(UL)	
Rated impulse withstand voltage	6000V	12000V	
Over voltage category		III	
Ambient temperature range	-40°C~+85°C	-40°C ~ +85°C(TUV), -40°C ~ +75°C(UL)	
Protection rating	IP67	IP68	
Flame resistance degree		UL94-V0	
Product standard	EN 62852:2014 UL6703	EN 62852 UL6703 2PFG2330 CNCA/CTS0002-2012	
RoHS compliant		Yes	

Ordering Information

AC (Three phase Trunk) Accessories

Type	Model	Description
3P-AC Trunk Cable	3P-AC Trunk Cable_14T_14L_12AWG-3.05m	14 Three Phase AC Trunks and 14 AC Cable (Per Cables Length 3.05m, 12AWG)
	3P-AC Trunk Cable_14T_14L_10AWG-3.05m	14 Three Phase AC Trunks and 14 AC Cable (Per Cables Length 3.05m, 10AWG)
3P-AC Trunk Connector	3P-AC Trunk Connector	1 Three Phase AC Trunk Connector
3P-AC Trunk Port Disconnect Tool	3P-AC Trunk Port Disconnect Tool	1 Three Phase AC Trunk Port Disconnect Tool
3P-AC Trunk Port Cap	3P-AC Trunk Port Cap	1 Three Phase AC Trunk Port Cap
3P-AC Trunk Connector Unlock Tool	3P-AC Trunk Connector Unlock Tool	1 Three Phase AC Trunk Connector Unlock Tool
3P-AC Trunk End Cap	3P-AC Trunk End Cap	1 Three Phase AC Trunk End Cap

DC Accessories

Type	Model	Description
DC Connector-F	BC03A-F-C24	1 DC Female Connector (Betteri)
DC Connector-M	BC03A-M-C24	1 DC Male Connector (Betteri)
DC Connector Unlock Tool	MC4_Con_Unlock	1 DC Connector Disconnect Tool
DC Extension Cable	DC_Ext_Cable-1m	1 DC Male Connector (Betteri), 1 DC Cable (Cable Length 1m, 12AWG) and 1 DC Female Connector (Betteri)
	Stau_DC_Ext_Cable-1m	1 DC Male Connector (Staubli), 1 DC Cable (Cable Length 1m, 12AWG) and 1 DC Female Connector (Staubli)